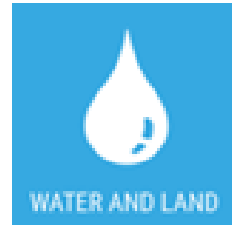




European Union Network for the
Implementation and Enforcement
of Environmental Law



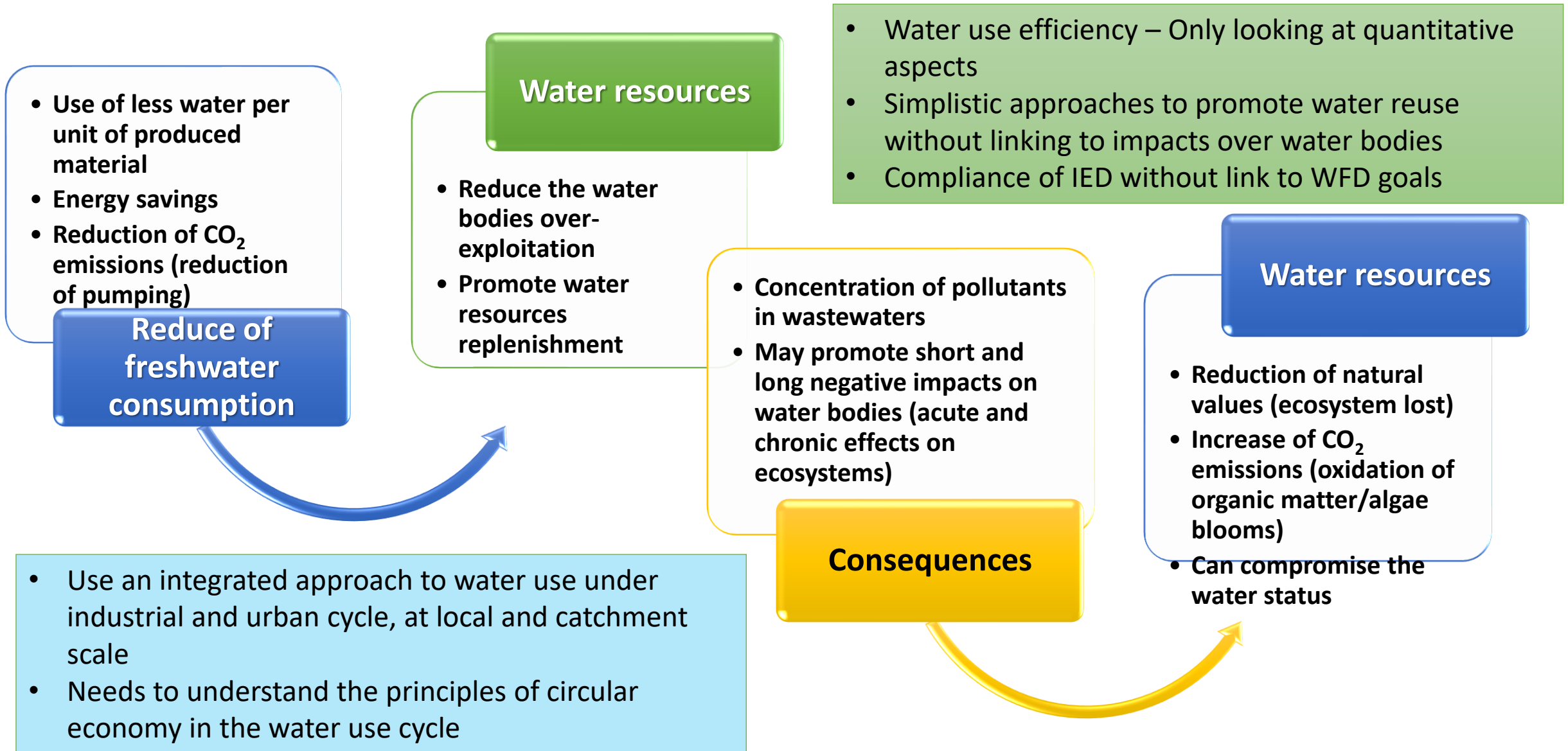
The WiNE project and the index of circularity

Anabela Rebelo & Genève Farabegoli
Bucharest
17-Oct-2023



ISPRA
Italian National Institute
for Environmental
Protection and Research

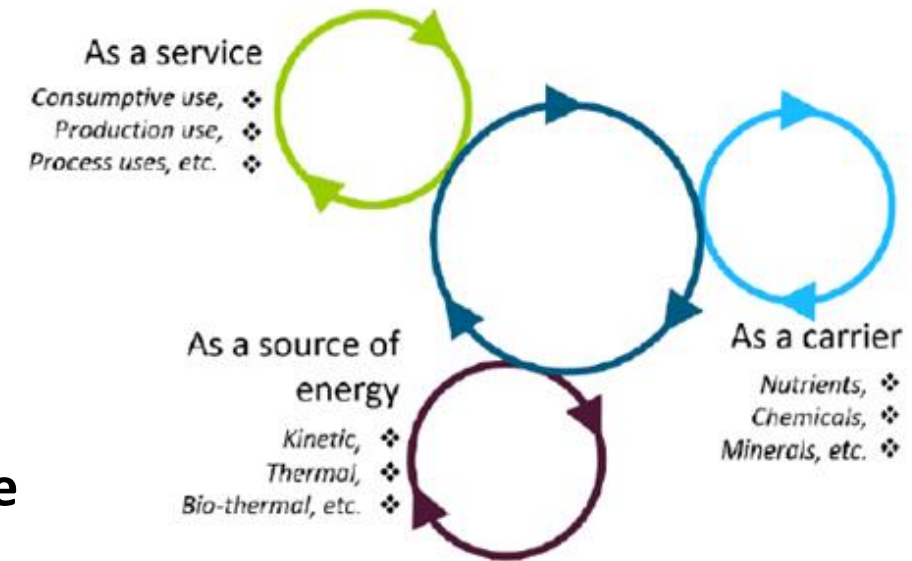
BACKGROUND INFORMATION FROM IWA 2017-2019



WATER CIRCULARITY

Classic approach:

- Water use efficiency, namely the quantitative aspects through the reduction of consumptions and losses
- Rain waters recovery
- Water reuse.
- Use of sludge from wastewater treatment plants and manure as a source of organic matter and nutrients and for energy production



To achieve a real transition, the above factors cannot be seen as individual indicators but instead they should be linked with the several possible processes

Important trade-offs and synergies between societal decisions on health and environment and technological developments may be overlooked due to their usual separate treatment (Hauschild *et al.*, 2022)

HOW TO DEVELOP THE INDEX?

SMART criteria: Easily accessible and measurable factors (key factors) that take into account the relationships between the water use patterns, the processes and the environmental systems were considered as inputs

S

SPECIFIC

The index accurately describes what is intended to be measured and does not include multiple measurements

M

MEASURABLE

Regardless of who uses the index, consistent results can be obtained and tracked under the same conditions

A

ACHIEVABLE

Collecting data for the index is simple, straightforward, and cost-effective

R

RELEVANT

The index is closely connected with each respective input, output or outcome

T

TIME-BOUND

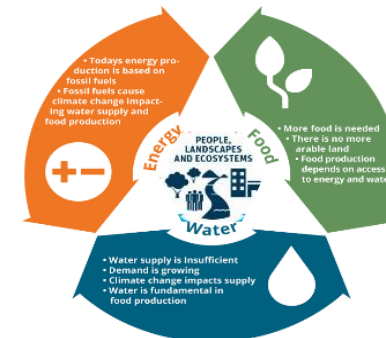
The index includes a specific time frame, i.e., the validity of the environmental/ discharge permit

WASTEWATER IN NATURAL ENVIRONMENT – WINE 2019/20

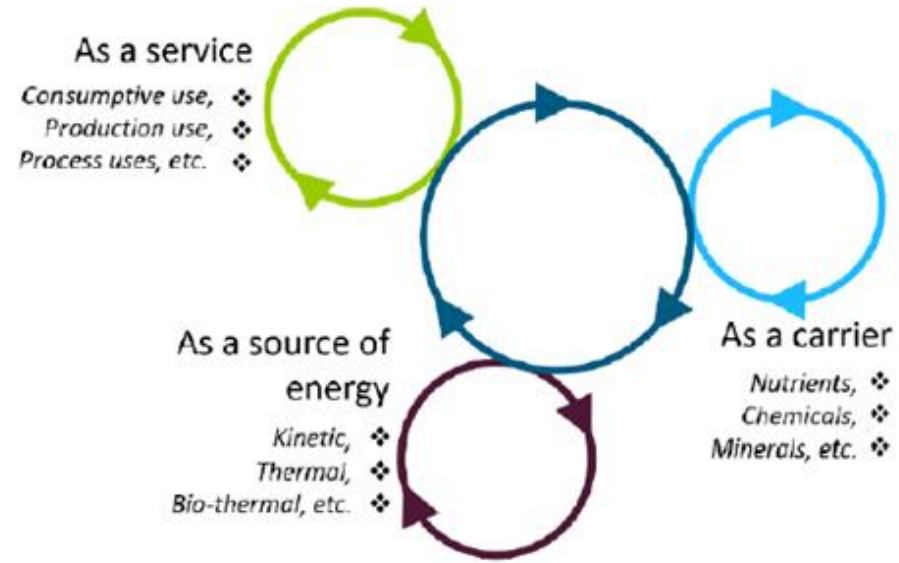
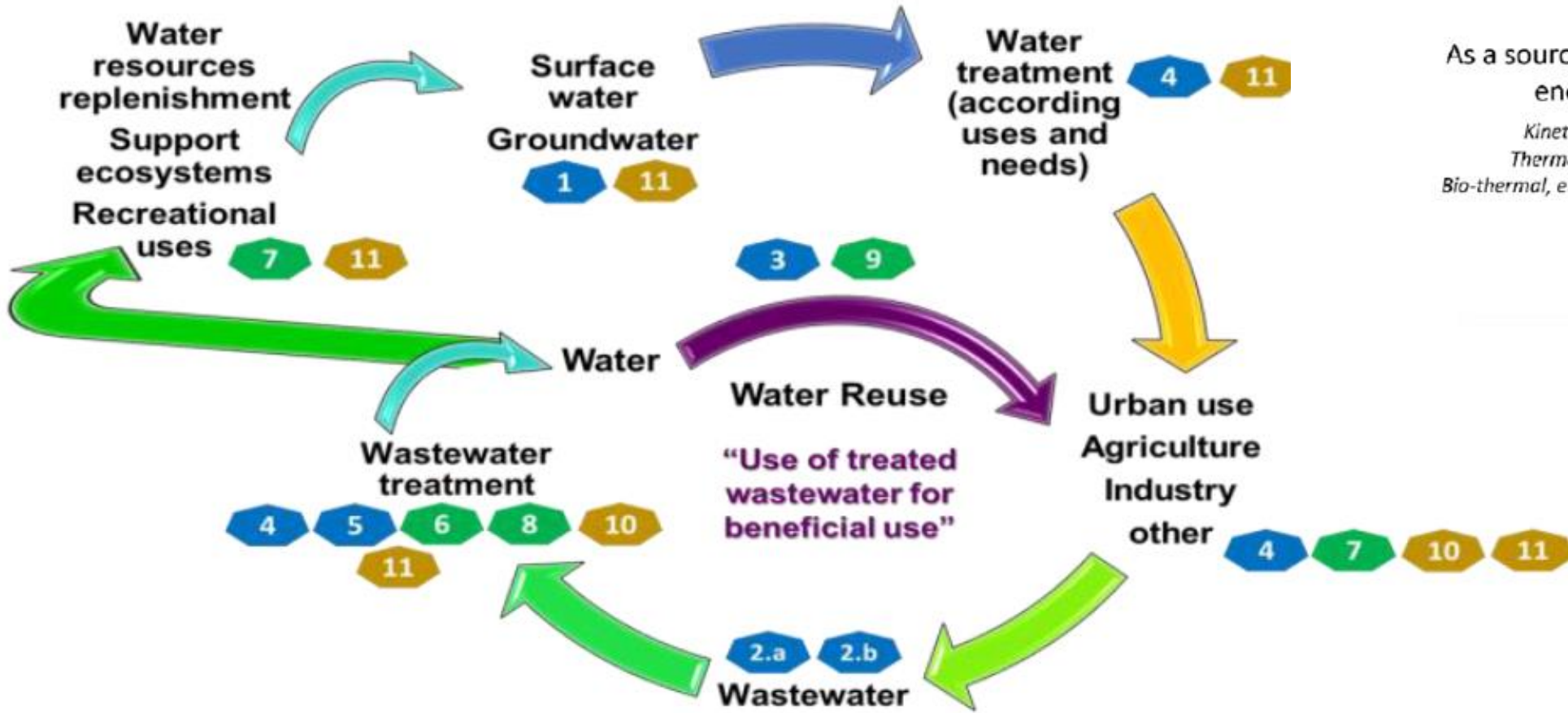
Circularity Index (IC) developed to endorse the transition to the circular economy: Tool to measure the circularity of a certain process or installation

**K
e
y
-
F
a
c
t
o
r
s**

1. Freshwater consumption
2. Wastewater discharges:
 - a. Non-IED installations
 - b. IED installations
3. Water reuse
4. Best management practice and technologies
5. Priority substances (PS), priority hazardous substances (PHS) and other pollutants (OP) and specific pollutants (SP)
6. Microplastics and/or compounds of emergent concern
7. Biodiversity
8. Recovery of nutrients
9. Internal industrial symbiosis
10. Sludge
11. Voluntary and incentive instruments



WATER CIRCULARITY



Key Factors: Distributed by 3 levels of Importance

WASTEWATER IN NATURAL ENVIRONMENT – WINE 2019/20

$$I_c = \frac{\sum (f_{i \text{ s-key}} \times f_{i \text{ w}})}{N_f} \quad \text{INDEX}$$

$$f_{i \text{ w}} = \frac{|f_{i \text{ s-key}}|}{F_{\text{key}} \times n_{\text{s-key app}}} \quad \text{WEIGHTING FACTOR}$$

$$N_f = \frac{n_{F_{\text{key}} \times 9} + n_{F_{\text{key}} \times 5} + n_{F_{\text{key}} \times 1}}{5 \times 9 + 4 \times 5 + 2 \times 1} = \frac{9n_{F_{\text{key}} \times 9} + 5n_{F_{\text{key}} \times 5} + n_{F_{\text{key}} \times 1}}{67} \quad \text{NORMALIZATION FACTOR}$$

- $I_c < 0$ Negative Circularity: Negative inputs for the circular economy (negative impacts for water bodies)
- $I_c = 0$ No inputs for circular economy
- $0 < I_c \leq 0,85$ Low Circularity: Low level of inputs for circular economy
- $0,85 < I_c \leq 1,5$ Medium Circularity: Medium level of inputs for circular economy
- $I_c > 1,5$ High Circularity: High level of inputs for circular economy

Excel tool 1.0

Indicator	Value	Weight	Weighted Value
Compliance of ELV without link to the WFD (flat values) and with no known effects on water status	2,00	1	0,00
Compliance of ELV with link to the WFD	2,00	1	0,00
3 Water Reuse			
Promotion of water reuse with negative impacts on final concentration of the wastewaters discharged with negative impact on surface water	-8,00	0	0,00
Promotion of water reuse with negative impacts on final concentration of the wastewaters discharged and no impact on groundwater abstraction	-3,00	0	0,00
Promotion of water reuse without negative impacts on final concentration of the wastewaters discharged	3,00	0	0,00
Promotion of water reuse with positive impacts on final concentration of the wastewaters discharged	6,00	0	0,00
4 Best management practice & technologies			
Use of lower level than BAT	-9,00	1	0,00
Use of BAT	1,00	1	0,00
Promotion of management solutions to reduce CO2 emissions	1,50	1	0,04
Use of new technologies (go beyond BAT, with promotion of new developments) (ex. Equipment, maintenance and process improvement to reduce the multiphase leaks into air/water)	4,50	1	0,00
5 Minimizing substances (PES) / preventing hazardous substances (PHS) and other substances			
With PHS and no actions to foreseen the ceasing or phase-out discharges, emissions and losses	-8,00	0	0,00
With PHS/PEP and no actions to foreseen the reduction of discharges, emissions and losses	-3,00	0	0,00
With PHS/PEP and actions to foreseen the reduction of discharges, emissions and losses	3,00	0	0,00
With PHS and actions to foreseen the ceasing or phase-out discharges, emissions and losses	6,00	0	0,00
6 Minimizing and/or eliminating CO2 emissions			
Promotion of removal solutions to reduce methane content in wastewater discharge	2,50	1	0,00
Promotion of removal solutions to reduce compounds of emergent concern content in wastewater	2,50	1	0,00
7 Bioremediation			
Promotion of water reuse with negative impacts on biodiversity (water quality and quantity index)	-5,00	0	0,00
Promotion of water reuse without negative impacts on biodiversity (water quality and quantity index)	3,00	0	0,00
Promotion of water reuse with positive impacts on biodiversity (water quality and quantity index)	3,00	0	0,00
8 Recovery of nutrients			
Without removal of nutrients with visible negative effects on water bodies (directly linked with the removal of nutrients to prevent negative effects on water bodies without further nutrient uses)	-5,00	1	0,00
Removal of nutrients to prevent negative effects on water bodies without further nutrient uses	0,50	1	0,00
Just recovery of nutrients for further uses (without influence on water bodies)	1,50	1	0,04
Removal of nutrients to prevent negative effects on water bodies with further nutrient uses (ex. Sludge)	3,00	1	0,00
9 Material and nutrient efficiency			
Without promotion of integrated approach for competitive advantages	-5,00	1	1
Promotion of integrated approach for competitive advantages through the exchange of water, materials and energy between industries (ex. Vattenfall with metal industry in a metal factory)	5,00	1	0,00
10 Sludge			
Minimization of sludge production, bio-thermal energy production from anaerobic digestion and reuse of treated sludge from aerobic digestion with impact on final concentration of the wastewaters discharged	-1,00	1	0,00
Minimization of sludge production, bio-thermal energy production from anaerobic digestion and reuse of treated sludge from aerobic digestion without impact on final concentration of the wastewaters discharged	1,00	1	0,50
11 Voluntary and environmental management systems			
Without adoption of regulatory instruments, economic instruments, certification and labelling rules, environmental management systems	-3,00	0	0,00
Adoption of regulatory instruments, economic instruments, certification and labelling rules, environmental management system as measures towards the circular economy	1,00	0	0,00

KEY-FACTORS

Key Factor	Key and sub-key factors	Key factor value (F _{key})	Sub-Key factor value (f _{i s-key})
1	Freshwater consumption	9	
	Measures to reduce consumption without linking the impacts on the quality of wastewaters and contributing directly to its degradation		-9,00
	Measures to reduce consumption without linking impacts on the quality of wastewaters (with non-significant variation on wastewater quality, e.g., reduction on groundwater abstraction with low impacts on wastewaters)		1,00
	Measures to reduce consumption with measures to reduce possible effects of effluents concentration		4,00
	Reducing abstraction directly from water body (ex. Rainwater collection and reuse) promoting		4.00
2.b	Wastewater discharges IED installations	9	
	Compliance of BREF-EAV without link to the WFD		-9,00
	Situations where BREF-EAV can be equal to ELV, according check-list		2,00
	Compliance of ELV (ELV defined according WFD principles, where ELV needs to be lower than BREF-EAV, according check-list)		7,00
3	Water Reuse	9	
	Promotion of water reuse with negative impacts on final concentration of the wastewaters discharged with negative impact on surface water		-6,00
	Promotion of water reuse with negative impacts on final concentration of the wastewaters discharged and no impact on groundwater abstraction		-3,00
	Promotion of water reuse without negative impacts on final concentration of the wastewaters discharged		3,00
	Promotion of water reuse with positive impacts on final concentration of the wastewaters discharged		6,00
4	Best management practice & Technologies	9	



**Positive &
Negative Impacts**

KEY-FACTORS

Key Factor	Key and sub-key factors	Key factor value (F _{key})	Sub-Key factor value (f _{i s-key})
6	Microplastics and/or Compounds of emergent concern	5	
	Promotion of removal solutions to reduce microplastic content in wastewater discharge		2,50
	Promotion of removal solutions to reduce compounds of emergent concern content in wastewater discharge		2,50
7	Biodiversity	5	
	Promotion of water reuse with negative impacts on biodiversity (water quality and quantity index)		-5,00
	Promotion of water reuse without negative impacts on biodiversity (water quality and quantity index)		2,00
	Promotion of water reuse with positive impacts on biodiversity (water quality and quantity index)		3,00
8	Recovery of nutrients	5	
	Without removal of nutrients with visible negative effects on water bodies (directly linked with the installation)		-5,00
	Removal of nutrients to prevent negative effects on water bodies without further nutrient uses		0,50
	Just recovery of nutrients for further uses (without influence on water bodies)		1,50
	Removal of nutrients to prevent negative effects on water bodies with further nutrient uses (ex. Struvite recovery)		3,00

10	Sludge	1	
	Minimization of sludge production, bio-thermal energy production from anaerobic digestion and reuse of treated sludge from aerobic digestion with impacts on final concentration of the wastewaters discharged		-1,00
	Minimization of sludge production, bio-thermal energy production from anaerobic digestion and reuse of treated sludge from aerobic digestion without impacts on final concentration of the wastewaters discharged		1,00
11	Voluntary and incentive instruments	1	



**Positive &
Negative Impacts**

RESULTS FROM REAL CASES

Case study	IED Installation	NON IED Installation	Description of WWTP	Ic
A 1	X		Pulp mill before permit review	-1,24
A 2	X		Pulp mill after permit review	1,19
A 3		X	Urban WWTP	1,91
B 1	X		Pulp and paper industry	0,35
B 2	X		Biorefinery	2,13
B 3	X		Oil refinery	-1,01
C 1		X	Urban WWTP with industrial connections	3,48
C 2	X		Company cleaning and shredders plastic barrels	1,46
D 1	X		Pulp and paper industry and urban wastewater	1,39
D 2	X		Fertilizer production plant	1,00
D 3	X		Large smelter	2,94
E 1	X		Pulp and paper industry	0,52
E 2	X		Brewery	1,09

WATER CIRCULARITY INDEX AND UWWTP





- The Index allows to measure some important interlinks such as:
 - Compliance of ELV defined according WFD principles or just simple flat values defined on current legislation
 - Removal of nutrients to prevent negative effects on water bodies and/or further nutrient uses (with/without influence on water bodies)
 - Promotion of water reuse and its relationship with impacts on concentration of discharge TWW and biodiversity
 - Removal of PS/PHS, microplastics and compounds of emergent concern (CoC)

Considering the effects of non removal of microplastics and CoC

Case study	IED Installation	NON IED Installation	Description of WWTP	Ic ¹	Ic ²
A 3		X	Urban WWTP	1,91	1,69
C 1		X	Urban WWTP with industrial connections	3,48	2,68
D 1	X		Pulp and paper industry and urban wastewater	1,39	1,08

Without considering effects of non removal of microplastics and CoC

HIGH CIRCULARITY VS NEGATIVE CIRCULARITY

- **ELV compliance according WFD criteria**
 - **Use of new technologies**
 - **Consideration of PHS and measures to cease, phase-out emissions, discharges and losses**
 - **Promotion of Water reuse with positive impacts on biodiversity**
 - **Promotion of an integrated approach for competitive advantages**
 - **Reduction of sludge production with no impact on final effluent concentration**
 - **Adoption of voluntary and incentive instruments**
- 
- **Measures to reduce water consumption with a negative impact on wastewater quality and which directly contribute to the degradation of the receiving environment**
 - **Compliance of EAV-BAT (IED installations) with no link to WFD**
 - **Promotion of water reuse with negative impacts on final concentration with negative impacts on surface water**
 - **Without removal of nutrients and with consequent visible negative effects on the water bodies**
 - **Without adoption of voluntary and incentive instruments**
- 

WINE: CURRENT FOCUS



Critical activities/facilities with high pressure over water bodies



Regional/local activities with significant impact in terms of water use (e.g., high water consumption, high discharge loads, seasonal activities, etc.)



Food production activities that uses or intended to use treated wastewaters and/or biosolids or sludge

MAIN GOAL & TEAM

This project intends to improve the Water Circularity Index and its application to identify and link best practices in terms of:

- Water use within process or activity and reuse (use of treated wastewaters as an alternative water source)
- Water quality management
- Sludge management
- Water resources uses
- Energy balance



REGIONAL OR LOCAL ACTIVITIES

- **Local and or seasonal activities with significant impact in terms of water use but important for local communities' economy**

SUGARCANE PRODUCTION: WASTES AND BY-PRODUCTS

The sugarcane (*Saccharum officinarum*) is one of the most important crops in the History of Madeira Island.

The production of sugarcane in Madeira Island dates back to the 15th century, having contributed inexorably to the economic, social and cultural development of the Region through trade and sugar exports. Currently, sugarcane is mainly used in the production of cane honey and sugarcane rum (agricultural rum).

- **Problems: Bagasse & Vinasse**

- **Bagasse may be used as substrate for mushroom production, for pellets or for cosmetic industry**
- **Vinasse requires specific treatment (high pH and organic load) prior discharge into water bodies or to be used as a fertilizer for banana crop production**

Circularity water index: Allows to find the solutions that promotes a higher transition to a circular model and to identify better synergies. Also helps industry understanding the importance of environmental compliance for the “sustainability” of their products



WATER REUSE: CROPS IRRIGATION



Options to use freshwater/reclaimed water depends on the location of farmers and type of crops and the quality of water from the diverse sources...

Are used appropriate efficient water use measures (type of crops, location and growing cycle)?

Are being used condensate/rain water from greenhouses roofs?

Is the water used by farmers affecting other uses?

...

FINAL REMARKS

The index allows the impact of integrated approaches to water use to be assessed. It confirms the promotion of water circularity depending on the management options chosen

Application to IED and non-IED installations and water reuse solutions enables the cumulative impact of efficient water use to be assessed both in terms of quantity and quality

The index can/should be refined to include energy aspects and further integrate impacts on CO₂ emissions

The definition of factors applicable at the final product level could support the adoption of best practices in water use with relevance to regional and/or seasonal products

An indicator that promotes integrated compliance with environmental legislation

Reports available on: <https://www.impel.eu/en/projects/wastewater-in-natural-environment-wi-ne>

CAN THIS INDEX BECAME A LABEL?





European Union Network for the
Implementation and Enforcement
of Environmental Law



Thank you
for
your attention!